

SRV896AOGH



Product Family	Hob
Built-in type	Traditional
Dimensions	90 cm
Power supply	Gas
Type	Gas
EAN code	8017709233310



Aesthetics



Aesthetic	Coloniale
Colour	Anthracite
Material	Enamelled
Pan stands	Cast iron
Type of control setting	Control knobs
Control knob position	Front
No. of controls	6
Controls colour	Antique brass
Serigraphy colour	Gold

Programme / Functions

Total no. of cook zones	5
No. of gas cook zones	5

Options

Worktop Cut-Out	478-482x839-844 mm
-----------------	--------------------

Technical Features



Front-left - Gas - AUX - 1.10 kW
Rear-left - Gas - Rapid - 3.10 kW

Central - Gas - 2UR (dual) - 5.00 kW

Rear-right - Gas - Semi Rapid - 1.70 kW

Front-right - Gas - Semi Rapid - 1.70 kW

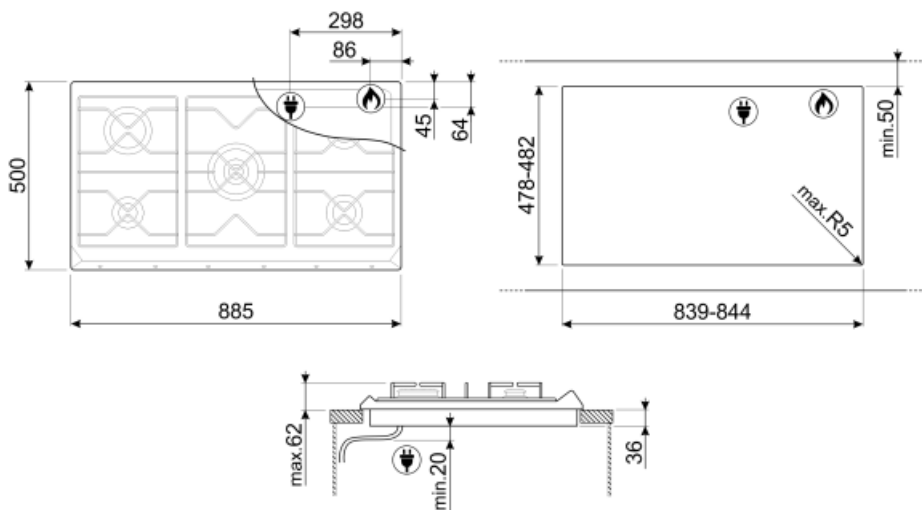
Gas safety valves Yes Automatic Ignition Yes

Electrical Connection

Electrical connection rating (W)	1 W	Frequency (Hz)	50/60 Hz
Voltage (V)	220-240 V	Power supply cable length	120 cm
Type of electric cable installed	Yes, Single phase		

Gas Connection

Gas Type	G20/G25 natural gas	Other gas connections provided	Conical
Gas connection	Cilindrical	Gas connection rating (W)	12400 W



Not included accessories



BB3679
Cast Iron griddle



6MP700BS
Hob knobs set - Cortina Silver/Silver



6MP850A01



6MP800P



TPK
Stainless steel grill plate to cook
Teppanyaki dishes



C90CNE-2
Black cover suitable for 90 cm gas hobs
with frontal controls.



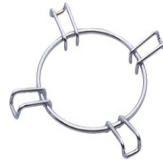
GGB90
Cast Iron pan stands suitable for 90 cm
hobs.



6MP700AO
Hob knobs set - Cortina Anthracite/Old
brass



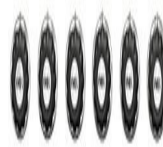
6MP700RWX
Hob knobs set - Cortina Red
Wine/Silver



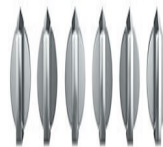
GRW
Wok support



C90CEB/1
White cover suitable for 90 cm gas
hobs with frontal controls.



6MP700AX
Hob knobs set - Cortina
Anthracite/Silver



6MPF2465X
Hob knobs set - Selezione







6MP700PO
Hob knobs set - Cortina Cream/Old
brass



C90CX/1
Glass cover with stainless steel frame
suitable for 90 cm hobs with frontal
control.

Symbols glossary (TT)

- | | | | |
|--|--|---|--|
|  | Standard installation: Traditional installation in tabletop, suitable for any kitchen sets |  | Heavy duty cast iron pan stands: for maximum stability and strength. |
|  | Ultra rapid burners: Powerful ultra rapid burners offer up to 5kw of power. |  | Knobs control |